

- SPECIFICATIONS and APPLICATION NOTES:**
1. MATERIAL: ANODIZED ALUMINUM AND STEEL
  2. MAX PRESSURE 100 PSI
  3. MAX TORQUE: ADJUSTABLE FROM 10 TO 50 FT-LBS
  4. ROTATIONAL TRAVEL: INFINITE
  5. 1/4" OD PUSH TO CONNECT AIR LINE FITTINGS INCLUDED (1/8" NPT)
  6. OPTIONAL POSITION SENSOR (5-24V M8 3PIN PNP SWITCH WITH MALE CONNECTOR).
  7. SENSOR RESOLUTION: 1/5 ROTATION

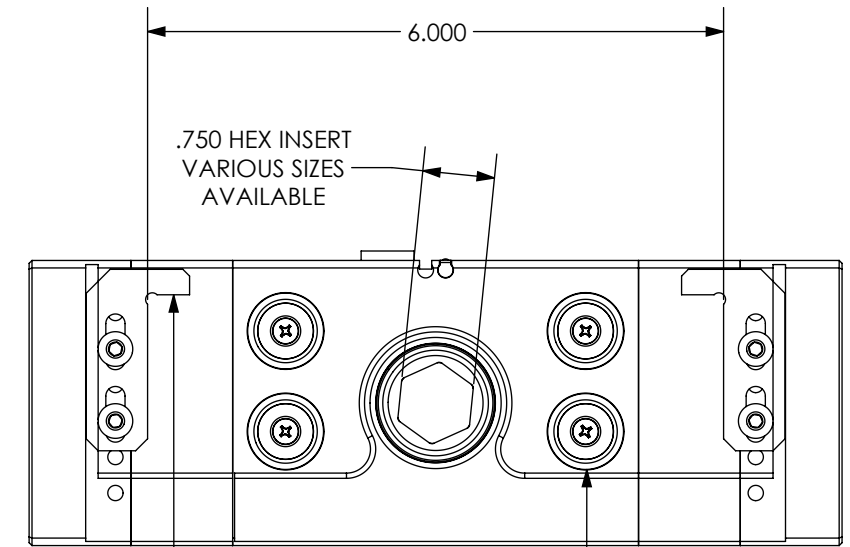
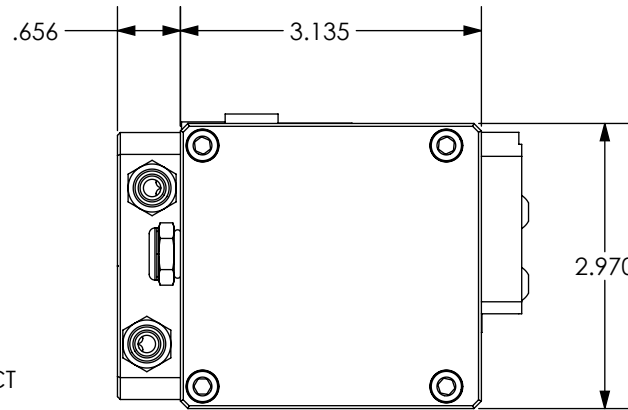
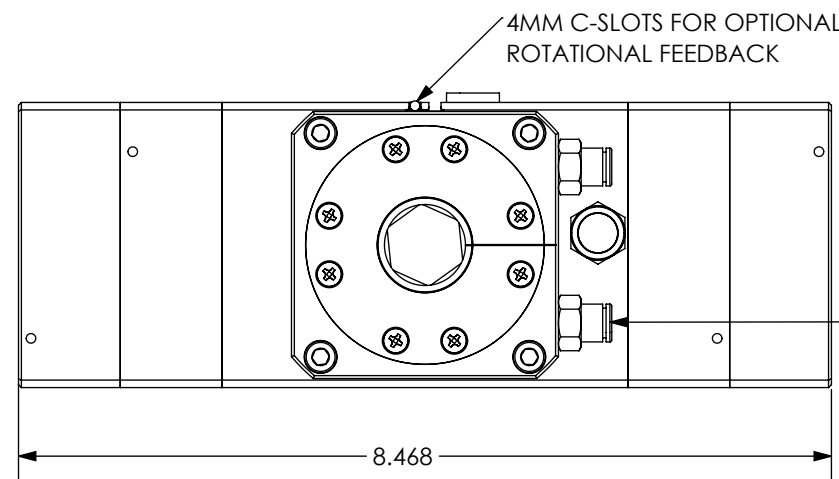
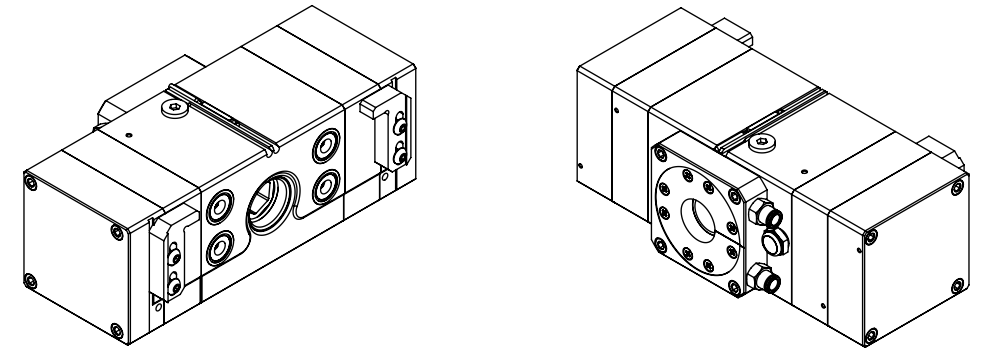
COMPATIBILITY	NOTE
KURT® D688	STANDARD
KURT DX6®	STANDARD
KURT 3600V	STANDARD
KURT D675	STANDARD
KURT 3610V	STANDARD
KURT HD690	STANDARD
ORANGE VISES	REQUIRES HEX ADAPTER AND ADAPTER PLATE KIT
SELECT CHICK VISES	REQUIRES HEX ADAPTER & ANTI-ROTATION BLOCKS KIT
OTHER BRANDS	SEND US YOUR VISE BRAND/MODEL & WE'LL VERIFY

sales@lightsoutmfg.com  
lightsoutmfg.com  
425-249-9707

**KURT® AND ASSOCIATED VISE MODEL NAMES ARE REGISTERED TRADEMARKS OF THE KURT MFG. COMPANY. LIGHTS OUT MFG IS NOT AFFILIATED WITH THE KURT MFG. COMPANY IN ANY WAY**

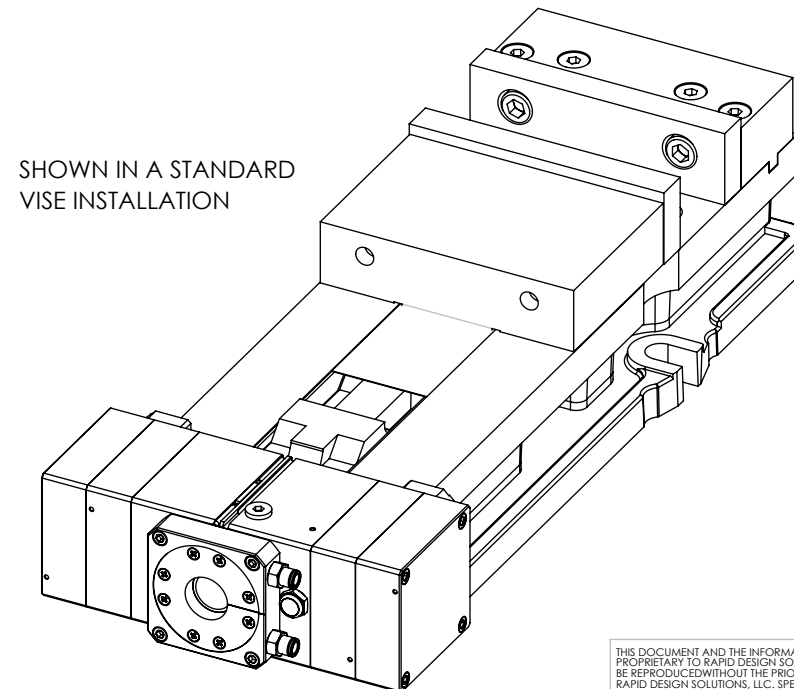
## INFINITE ROTATION PNEUMATIC VISE ACTUATOR FOR ROBOTIC WORK CELLS!

This high precision vise actuator/closer helps you automate your CNC by allowing a Robot to load and unload the workpiece without a human operator. Operates most precision 6" milling machine vises saving you the high cost of new hydraulic vises and pump systems when you need to quickly automate your existing setups! Order with optional IP67 feedback switch for a closed loop workholding system that enables programmable opening width! (Two sensors may also be used for tracking anytime directional output)



ADJUSTABLE ANTI-ROTATION BLOCKS SECURE THE ACTUATOR AGAINST ROTATIONAL FORCES. STANDARD BLOCKS WORK WITH MOST PRECISION 6" MACHINE VISES

POWERFUL MAGNETS SNAP THE VISE ACTUATOR SECURELY IN PLACE FOR QUICK TOOL-LESS REMOVAL. MOVE BETWEEN VISE SETUPS FAST!



SHOWN IN A STANDARD VISE INSTALLATION

### PRESSURE INPUT VS. TORQUE

FOR EACH PSI OF PRESSURE INPUT AN OUTPUT OF APPROXIMATELY .5 FT-LBS OF TORQUE IS GENERATED. TORQUE IS ADJUSTED BY REGULATING INPUT PRESSURE WITH A STANDARD INLINE REGULATOR.

INPUT PRESSURE PSI [BAR]	OUTPUT TORQUE FT-LB [NM]	APPROX. CLAMPING FORCE W/COMMON 6" MACHINE VISES* LB [kN]
25 [1.7]	12 [16]	490-615 [2.2-2.7]
50 [3.4]	25 [33]	1480-1850 [6.6-8.2]
100 [6.8]	50 [68]	3500-4400 [15.5-19.5]

\*Approx. force values are provided for general reference only. Actual force will vary depending on the vise type used.

## PATENT PENDING

DRAWN TROY OJALEHTO	DATE 2/05/2024		LIGHTS OUT MFG	
CHECKED	DATE		TITLE ROBOWRENCH INFINITE ROTATION HIGH TORQUE VISE ACTUATOR	REV A
ENGINEER	DATE	<small>UNLESS OTHERWISE SPECIFIED DIMENSIONS ARE IN TOLERANCES ARE:          .X=±.030          .XX=±.010          .XXX=±.005          .XXXX=±.0010          ANGLE=±1/2°          DO NOT SCALE DRAWING</small>	PART NUMBER RD10400	
ENGINEER	DATE		SIZE B	THIRD ANGLE PROJECTION
COG ENGR	DATE		LEGEND:	SCALE
MFG ENGR	DATE		■ CRITICAL DIM. ● TOOLING DIM. ▲ PROCESS DIM. XX DIMENSION ID.	SHEET 1 OF 1
TOOLING	DATE	QUALITY	RELEASED	DATE

THIS DOCUMENT AND THE INFORMATION CONTAINED HEREIN ARE PROPRIETARY TO RAPID DESIGN SOLUTIONS, LLC AND SHALL NOT BE REPRODUCED WITHOUT THE PRIOR WRITTEN PERMISSION OF RAPID DESIGN SOLUTIONS, LLC. SPECIFICATIONS SUBJECT TO CHANGE WITHOUT NOTICE. © 2019 Rapid Design Solutions, LLC